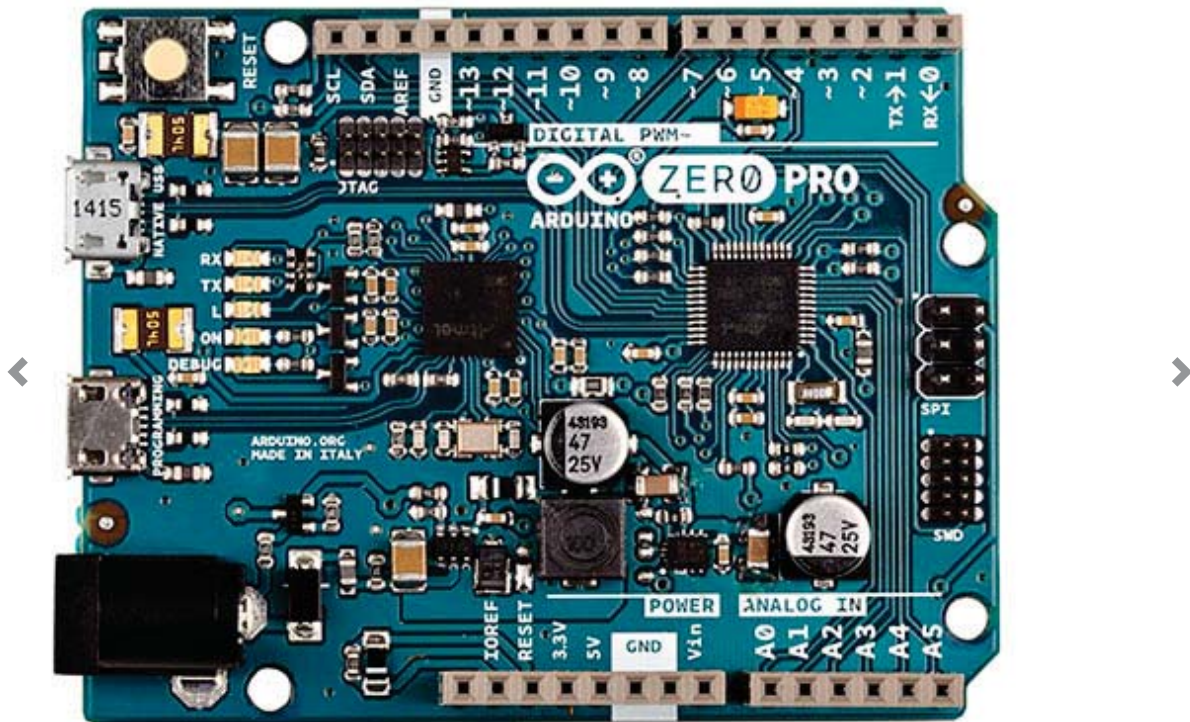


Arduino Zero Pro



Overview

With the new Arduino Zero Pro board, the more creative individual will have the potential to create one's most imaginative and new ideas for IoT devices, wearable technologies, high tech automation, wild robotics and other not yet thinkable adventures in the world of makers.

The Arduino Zero Pro represents a simple, yet powerful, 32-bit extension of the Arduino UNO platform. The board is powered by Atmel's SAMD21 MCU, featuring a 32-bit ARM Cortex® M0 core.

With the addition of the Zero board, the Arduino family becomes larger with a new member providing increased performance.

The power of its Atmel's core gives this board an upgraded flexibility and boosts the scope of projects one can think of and make; moreover, it makes the Zero Pro the ideal educational tool for learning about 32-bit application development.

Atmel's Embedded Debugger (EDBG), integrated in the board, provides a full debug

interface with no need for additional hardware, making debugging much easier. EDBG additionally supports a virtual COM port for device programming and traditional Arduino boot loader functionality uses.

Summary

Microcontroller	ATSAMD21G18, 48pins LQFP
Operating Voltage	3.3V
Digital I/O Pins	14, with 12 PWM and UART
Analog Input Pins	6, 12-bit ADC channels
Analog Output Pins	1, 10-bit DAC
DC Current per I/O Pin	7 mA
Flash Memory	256 KB
SRAM	32 KB
EEPROM	up to 16KB by emulation
Clock Speed	48 MHz

Schematic & Reference Design

EAGLE files: [arduino-zero-pro-reference-design.zip](http://download.arduino.org/products/ZEROPRO/Arduino-Zero-Pro-V3-ref_des.zip)

(http://download.arduino.org/products/ZEROPRO/Arduino-Zero-Pro-V3-ref_des.zip)

Schematic: [arduino-zero-pro-schematic.pdf](http://download.arduino.org/products/ZEROPRO/Arduino-Zero-Pro-V3-SCH.pdf)

(<http://download.arduino.org/products/ZEROPRO/Arduino-Zero-Pro-V3-SCH.pdf>)

Power

The Arduino Zero Pro can be powered via the micro USB connection or with an external power supply. The power source is selected automatically.

External (non-USB) power can come either from an AC-to-DC adapter (wall-wart) or battery. The adapter can be connected to the board by plugging a 2.1mm center-positive plug into the board's power jack. Leads from a battery can be inserted in the Gnd and Vin pin headers of the POWER connector.

Power input	Voltage requirements	Current requirements	Connector marking
External power	5V \pm 2 % (\pm 100mV) for USB host operation. 4.3V to 5.5V if USB host operation is not required	Recommended minimum is 1A to be able to provide enough current for connected USB devices and the board itself. Recommended maximum is 2A due to the input protection maximum current specification.	PWR
Embedded debugger USB	4.4V to 5.25V (according to USB spec)	500mA (according to USB spec)	DEBUG USB
Target USB	4.4V to 5.25V (according to USB spec)	500mA (according to USB spec)	TARGET USB

The kit will automatically detect which power sources are available and choose which one to use according to the following priority:

1. External power
2. Embedded debugger USB
3. Target USB

External power is required when the 500mA through the USB connector is not enough to power a connected USB device in a USB host application.

The power pins are as follows:

- **VIN.** The input voltage to the Arduino board when it's using an external power source (as opposed to 5 volts from the USB connection or other regulated power source). You can supply voltage through this pin, or, if supplying voltage via the power jack, access it through this pin.
- **5V.** The regulated power supply used to power the microcontroller and other components on the board. This can come either from VIN via an on-board regulator, or be supplied by USB or another regulated 5V supply.
- **3V3.** A 3.3 volt supply generated by the on-board regulator. Maximum current draw is 50 mA.

- **GND.** Ground pins.
- **IOREF.** The voltage at which the i/o pins of the board are operating (i.e. VCC for the board). This is 3.3V on the Zero Pro.

Memory

The ATSAM21G18 has 256 KB (with 4 KB used for the bootloader). The bootloader is factory pre burnt by Atmel and is stored in a dedicated ROM memory. The bootloader is protected using the NVM fuse.

It also carries 32 KB of SRAM and up to 16KB by emulation of EEPROM (which can be read and written with the EEPROM library).

Input and Output

Each of the 20 digital i/o pins on the Zero Pro can be used as an input or output, using `pinMode()`, `digitalWrite()`, and `digitalRead()` functions. They operate at 3.3 volts. 7mA as maximum DC current for I/O pins and an internal pull-up resistor (disconnected by default) of 20-50 kOhms. In addition, some pins have specialized functions:

- **Serial:** 0 (RX) and 1 (TX). Used to receive (RX) and transmit (TX) TTL serial data using the ATSAM21G18 hardware serial capability. Note that on the Zero Pro, the Serial class refers to USB (CDC) communication; for TTL serial on pins 0 and 1, use the `Serial1` class.
- **TWI:** 2 (SDA) and 3 (SCL). Support TWI communication using the Wire library.
- **PWM:** Pins 2 to 13 Provide 8-bit PWM output with the `analogWrite()` function. The resolution of the PWM can be changed with the `analogWriteResolution()` function.
Note1 The pins 4 and 10 can not be used simultaneously as PWM.
Note2 The pins 5 and 12 can not be used simultaneously as PWM.
- **SPI:** on the ICSP header. These pins support SPI communication using the SPI library. Note that the SPI pins are not connected to any of the digital I/O pins as they are on the Uno, They are only available on the ICSP connector. This means that if you have a shield that uses SPI, but does NOT have a 6-pin ICSP connector that connects to the Zero Pro's 6-pin ICSP header, the shield will not work.
- **LED:** 13. There is a built-in LED connected to digital pin 13. When the pin is HIGH value, the LED is on, when the pin is LOW, it's off.
- **Analog Inputs:** A0-A5. The Zero Pro has 6 analog inputs, labeled A0 through A5. Pins A0-A5 appear in the same locations as on the Uno; Each analog input provides 12 bits of resolution (i.e. 4096 different values). By default the analog inputs measure from ground to 3.3 volts, though is it possible to change the upper end of their range using the AREF pin and the `analogReference()` function.
- **DAC:** pin A0 provides true analog outputs with 10-bits resolution (1023 levels)

with the `analogWrite()` function. This pin can be used to create an audio output using the Audio library.

There are a couple of other pins on the board:

AREF. Reference voltage for the analog inputs. Used with `analogReference()`.

Reset. Bring this line LOW to reset the microcontroller. This is typically used to add a reset button when shields are used that block the one already present on the board.

Communication

The Arduino Zero Pro has a number of facilities for communicating with a computer, with another Arduino or other microcontrollers, and with different devices like phones, tablets, cameras and so on. The SAMD21 provides one hardware UART and three hardware USARTs for TTL (3.3V) serial communication.

The Programming port is connected to EDBG, which provides a virtual COM port to software on a connected computer (To recognize the device, Windows machines will need a .inf file, but OSX and Linux machines will recognize the board as a COM port automatically.). The EDBG is also connected to the SAMD21 hardware UART. The Serial on pins RX0 and TX0 provides Serial-to-USB communication for programming the board through the ATSAMD21G18 microcontroller. The Arduino software includes a serial monitor allowing simple textual data to be sent to and from the board. The RX and TX LEDs on the board will flash when data is being transmitted via the ATSAMD21G18 chip and USB connection to the computer (but not for serial communication on pins 0 and 1).

The Native USB port is connected to the SAMD21. It allows for serial (CDC) communication over USB. This provides a serial connection to the Serial Monitor or other applications on your computer. It also enables the Due to emulate a USB mouse or keyboard to an attached computer.

The Native USB port can also act as a USB host for connected peripherals such as mice, keyboards, and smartphones.

The SAMD21 also supports TWI and SPI communication. The Arduino software includes a Wire library to simplify use of the TWI bus. For SPI communication, use the SPI library.

Programming

The Arduino Zero Pro can be programmed with the Arduino software (download (/downloads)).

Uploading sketches to the SAMD21 is different from how it works with the AVR microcontrollers found in other Arduino boards: the flash memory needs to be erased before being re-programmed. Upload to the chip is managed by ROM on the SAMD21, which is run only when the chip's flash memory is empty.

Both the USB ports can be used to program the board, though use of the Programming port is recommended, due to the way the erasing of the chip is handled:

Programming port: To use this port, select "Arduino Zero Pro (Programming Port)" as your board in the Arduino IDE. Connect the Zero Pro's programming port (the one closest to the DC power jack) to your computer. The programming port uses the EDBG as a USB-to-serial chip connected to the first UART of the SAMD21 (RX0 and TX0). The EDBG has two pins connected to the Reset and Erase pins of the SAMD21. Opening and closing the Programming port connected at 1200bps triggers a "hard erase" procedure of the SAMD21 chip, activating the Erase and Reset pins on the SAMD21 before communicating with the UART. This is the recommended port for programming the Zero Pro. It is more reliable than the "soft erase" that occurs on the Native port, and it should work even if the main MCU has crashed.

Native port: To use this port, select "Arduino Zero Pro (Native USB Port)" as your board in the Arduino IDE. The Native USB port is connected directly to the SAMD21. Connect the Zero Pro's Native USB port (the one closest to the reset button) to your computer. Opening and closing the Native port at 1200bps triggers a 'soft erase' procedure: the flash memory is erased and the board is restarted with the bootloader. If the MCU crashed for some reason it is likely that the soft erase procedure won't work as this procedure happens entirely in software on the SAMD21. Opening and closing the native port at a different baudrate will not reset the SAMD21.

Automatic (Software) Reset

Rather than requiring a physical press of the reset button before an upload, the Arduino Uno is designed in a way that allows it to be reset by software running on a connected computer. One of the hardware flow control lines (DTR) of the ATmega8U2/16U2 is connected to the reset line of the ATmega328 via a 100 nanofarad capacitor. When this line is asserted (taken low), the reset line drops long enough to reset the chip. The Arduino software uses this capability to allow you to upload code by simply pressing the upload button in the Arduino environment. This means that the bootloader can have a shorter timeout, as the lowering of DTR can be well-coordinated with the start of the upload. This setup has other implications. When the Uno is connected to either a computer running Mac OS X or Linux, it resets each time a connection is made to it from

software (via USB). For the following half-second or so, the bootloader is running on the Uno. While it is programmed to ignore malformed data (i.e. anything besides an upload of new code), it will intercept the first few bytes of data sent to the board after a connection is opened. If a sketch running on the board receives one-time configuration or other data when it first starts, make sure that the software with which it communicates waits a second after opening the connection and before sending this data.

The Uno contains a trace that can be cut to disable the auto-reset. The pads on either side of the trace can be soldered together to re-enable it. It's labeled "RESET-EN". You may also be able to disable the auto-reset by connecting a 110 ohm resistor from 5V to the reset line.

USB Overcurrent Protection

The Zero Pro has a resettable polyfuse that protects your computer's USB ports from shorts and overcurrent. Although most computers provide their own internal protection, the fuse provides an extra layer of protection. If more than 500 mA is applied to the USB port, the fuse will automatically break the connection until the short or overload is removed.

Physical Characteristics

The maximum length and width of the Zero Pro PCB are 2.7 and 2.1 inches respectively, with the USB connector and power jack extending beyond the former dimension. Four screw holes allow the board to be attached to a surface or case. Note that the distance between digital pins 7 and 8 is 160 mil (0.16"), not an even multiple of the 100 mil spacing of the other pins.

Conformity Declaration

FCC

(http://download.arduino.org/products/ZEROPRO/Declaration_FCC_zero_pro.pdf)

RoHS

(http://download.arduino.org/products/ZEROPRO/Declaration_RoHS_zero_pro.pdf)