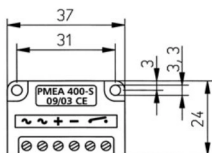
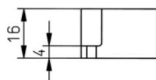


Half-wave rectifier and bridge rectifier

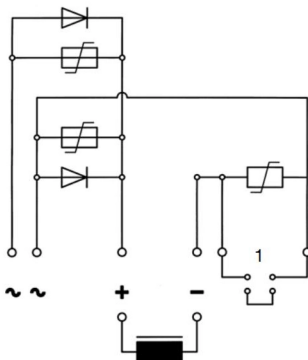
Half-wave rectifier



The half-wave rectifiers are fitted with high-quality avalanche diodes. This makes them much more resistant to voltage peaks.

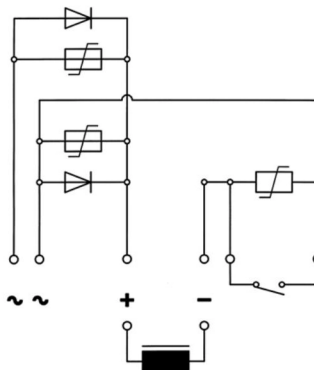
Switching from the AC side (WS)

When switching is carried out from the alternating current side, the magnetic field slowly declines and the brake is applied with a delay. The connection is from the rectifier on the alternating current side.



Switching from the DC side (GS)

Switching from the DC side is suitable for all drives that require exact braking, especially for hoisting gear. The connection is made between the rectifier and the coil. This achieves lower running time.



Mount the wire jumper (1) instead of the switching contact.

Name of article	Max. connection voltage [V, AC]	Output rectifier voltage [V, DC]	Rated current [A]	Peak block voltage [V, AC]
PME A 400 S	400	180	1,00	1700
PME A 600 S	600	270	1,85	1700