



**MANTECH<sup>®</sup>**  
**ELECTRONICS**

**P6865BC •**

## LINEAR POTENTIOMETERS 24mm

| SPECIFICATIONS  |                        |      |      |
|---|------------------------|------|------|
| RESISTANCE<br>+/- 20 %  | 1K                     | 2K   | 5K   |
|   | 10K                    | 20K  | 50K  |
|   | 100K                   | 200K | 500K |
|   | 1M                     | 2M   | -    |
| CURVE / TAPER TYPE  | LINEAR (Curve-B)       |      |      |
| RATED POWER   | 0.5W (Linear Taper)    |      |      |
| Max VOLTAGE   | 500V AC (Linear Taper) |      |      |
| ROTATION ANGLE  | 300 °                  |      |      |
|   |                        |      |      |
| APPLICATIONS  |                        |      |      |
| <ul style="list-style-type: none"><li>▪ Control equipment</li><li>▪ Variable speed drives</li><li>▪ Lighting control</li><li>▪ Appliances</li><li>▪ Etc.</li></ul>  |                        |      |      |
|   |                        |      |      |
| NOTES   |                        |      |      |
| These potentiometers are also available in : <ul style="list-style-type: none"><li>▪ Other Tapers / Curves (log, etc..)</li><li>▪ Other Shaft types and lengths</li><li>▪ Other terminal types</li><li>▪ Other body sizes</li><li>▪ Other power ratings</li></ul> |                        |      |      |

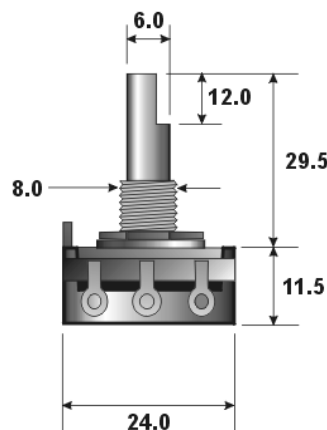
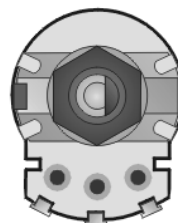
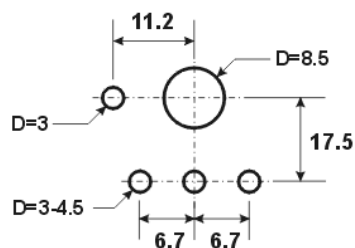
Technical drawing of a potentiometer showing top and side views with dimensions.

**Top View Dimensions:**

- Overall diameter: 11.2
- Shaft diameter: D=8.5
- Distance from shaft center to terminal center: 17.5
- Terminal diameter: D=3
- Terminal pitch: 6.7
- Terminal diameter: D=3-4.5

**Side View Dimensions:**

- Shaft diameter: 6.0
- Shaft length: 12.0
- Total height: 29.5
- Terminal height: 11.5
- Terminal pitch: 24.0
- Terminal diameter: 8.0



*These specifications are subject to change without notice.*

| PO BOX 260455 - EXCOM - 2023 - SOUTH AFRICA |                |                |                     |
|---|----------------|----------------|---------------------|
|   | Tel            | Fax            | email               |
| <b>Jhb</b>                                  | (011) 493-9307 | (011) 493-9319 | sales@mantech.co.za |
| <b>Cape</b>                                 | (021) 447-1245 | (021) 447-1822 | cape@mantech.co.za  |
| <b>Kzn</b>                                  | (031) 303-4222 | (031) 303-2646 | kzn@mantech.co.za   |
| <b>www.mantech.co.za</b>                    |                |                |                     |

**MANTECH ELECTRONICS, A MOBICON COMPANY**