

3164

H83P

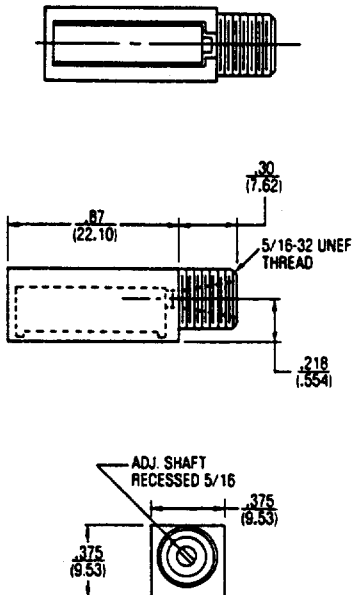
Models 3250/3252

Models 3290/3292

ADAPTER FOR MODELS 3005 AND 3006

The H-83P Adapter is used with Models 3005 (page 7) and 3006 (page 14). Simply select the part number you want and snap fit the unit in the plastic case. The H-83P with lockwasher and mounting nut is available in 50-piece lots.

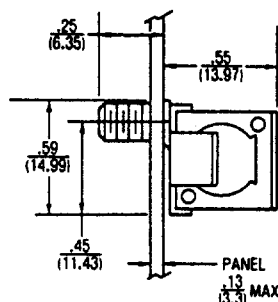
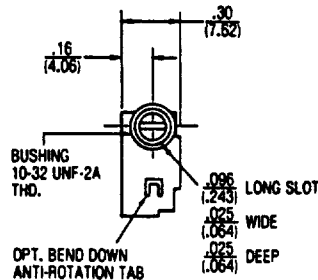
CUSTOMER ASSEMBLED



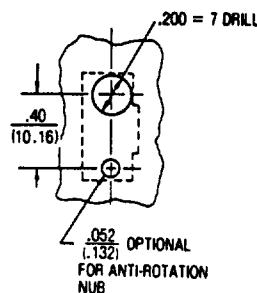
1/2 INCH SQUARE MULTITURN/CERMET/ WIREWOUND/INDUSTRIAL/ MILITARY MODELS

For complete product specifications, see pages 9 (3250) and 19 (3252).

FACTORY ASSEMBLED PANEL MOUNT



PANEL LAYOUT



NOTES:

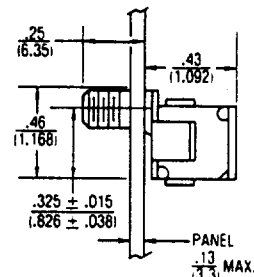
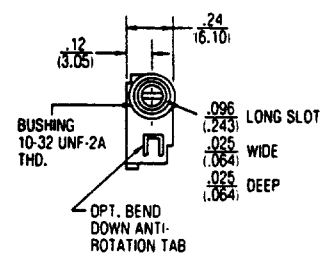
1. Provided with lockwasher and mounting nut.

Customer installed panel mounts available for Models 3250/3252 and Mil-Spec styles. Consult factory for panel mount part numbers.

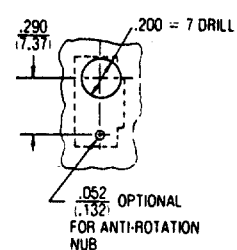
3/8 INCH SQUARE MULTITURN/CERMET/ WIREWOUND/INDUSTRIAL/ MILITARY MODELS

For complete product specifications, see pages 11 (3290) and 22 (3292).

FACTORY ASSEMBLED PANEL MOUNT



PANEL LAYOUT



NOTES:

1. Provided with lockwasher and mounting nut.

Customer installed panel mounts available for Models 3290/3292 and Mil-Spec styles. Consult factory for panel mount part numbers.

Specifications are subject to change without notice.