

FEATURES

- 127-note ROM memory
- 1.3V to 3.3V power supply and low power consumption
- RC oscillator on chip
- One shot or level hold mode (mask option)
- Sound range: 2.5 octaves, 2 series
- Tempo: 16 kinds (presto-largo)
- Double sound sources
- Digital Envelope Effect

DESCRIPTION

The BT8031 is a CMOS LSI chip, which plays a prearranged melodies. The ROM has a 127 words and can store up to two melodies with double sound sources, and it uses the built-in digital envelope circuit.

SONG LIST

02	Ding- Dong, Ding-Dong
01	For Elise
05	Its a small world
04	Ding-Dong

FUNCTIONS

- Dynamic speaker can be driven with external NPN transistor
- Power on reset; melody begins from the first note
- Start from the head of melody
- Bare chip or TO-92 are available

CHIP

PIN CONFIGURATION

BT8031
Chip size, mm :
1.40 x 1.65

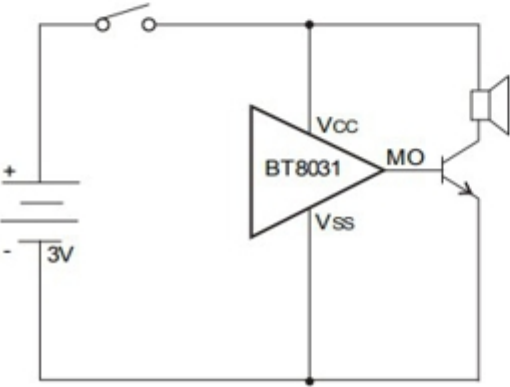
TO-92

ELECTRICAL CHARACTERISTICS (T_a = 25°C, V_{CC} = 1.5V, V_{SS} = 0V; unless otherwise specified)

Characteristic		Symbol	Test Condition	Min	Typ	Max	Unit
Operating Voltage		V _{CC}		1.3	3.0	3.3	V
Supply Current	Stand-by	I _S			-	0.5	μA
	Operating	I _{CC}	Output open			1	mA
Output Pulse Current		I _{OL}	V _{CC} = 1.3V, V _{SS} = 0.8V	0.6	1.5	-	mA

APPLICATION CIRCUITS

LEVEL HOLD MODE (TO-92)



NOTE: The chip substrate is connected to V_{SS}.

ONE SHOT MODE (BARE CHIP)

