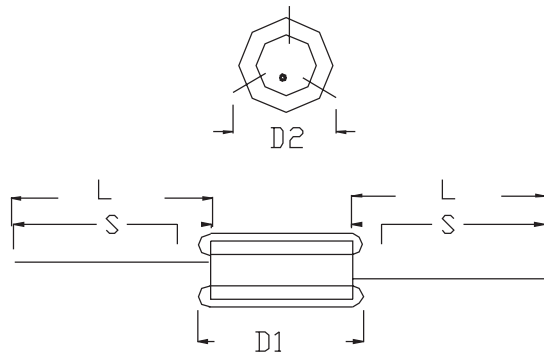


# FERRITE BEAD VHF CHOKES

VHF chokes of a ferrite core with a centre hole, available with and without sleeving. Suitable for use in the frequency range from 50 to 200 Mhz.

These chokes are suitable for broadband interference suppression in electrical apparatus and appliances in the HF and VHF range, and to reduce the radiated interference from radio and TV receivers.



## TECHNICAL DATA

### Manufacturing Standard.

Manufactured to BS 613

#### 1. INDUCTANCE TOLERANCE:

+/- 45 Micro Henries.

#### 2. RATED CURRENT:

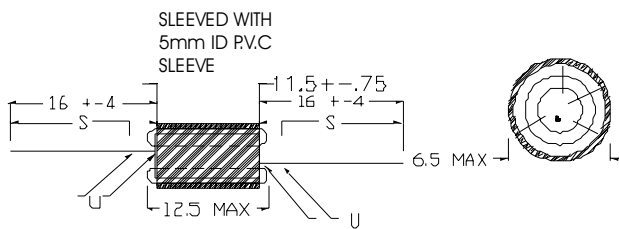
Referred to 50 Hz.

#### 3. RATED INDUCTANCE:

Measured at 1Khz at 25 °C

Amps.	Micro Henries.	D1.	D2.	T	L	Turns.	Temp. rise. ° C.	Code.	Remarks
5	60	12.5	6.5	.5	16	3	60	40/205	
5	60	12.5	6.5	.5	16	3	60	40/421	Tinned Leads

## Bead with sleeving and solid lead wire



## TECHNICAL DATA

### Manufacturing Standard.

Manufactured to BS 613

#### 1. INDUCTANCE TOLERANCE:

+/- 60 Micro Henries.

#### 2. RATED CURRENT:

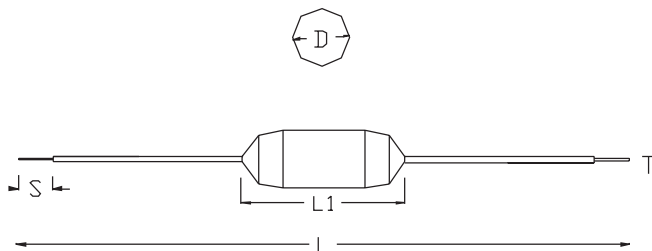
Referred to 50 Hz.

#### 3. RATED INDUCTANCE:

Measured at 1Khz at 25 °C

Amps.	Micro Henries.	D1.	D2.	T	L	Turns.	Temp. rise. ° C.	Code.	Remarks
5	80	12.5	6.5	.5	16	4	60	40/206	

## Bead with Sleeving and Flexible wires.



## TECHNICAL DATA

### Manufacturing Standard.

Manufactured to BS 613

#### 1. INDUCTANCE TOLERANCE:

+/- 45 Micro Henries.

#### 2. RATED CURRENT:

Referred to 50 Hz.

#### 3. RATED INDUCTANCE:

Measured at 1Khz at 25 °C

Amps.	Micro Henries.	L1.Ma x	D.Max	T.	L.	Turns.	Temp.Rise. ° C.	Code.	Remarks
5	60	42	6	.5mm Flexible Wire.	Sq 180	3	60	40/254	